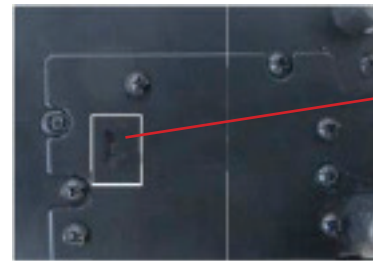


Wireless Foot Control Synchronisation



Figure 1.1



On/Off switch

Figure 1.2

Connection instructions:

1. Ensure the 12 pin remote socket is not connected
2. Turn the foot control on. The on/off switch is located on the underside of the foot control (Figure 1.2)
3. Press the encoder knob inward and hold while turning the machine on
4. After 2-4 seconds the LCD display will go blank
5. Within 10 seconds depress the foot control fully. The LCD display will turn on after 10 seconds.
6. You can now weld with variable current using the wireless foot control

P/N: 652223



BT WELD